

**simple rapid
installation on site**

FABEMA Mobile Traffic Installation (MTI)

FABEMA MOBILE TRAFFIC INSTALLATION (MTI)

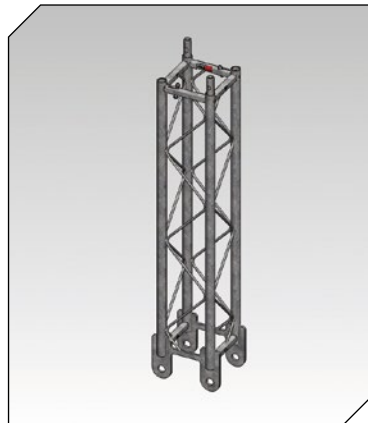
Mobile traffic light installations have been our business for more than 40 years. At FABEMA progress means always one step ahead. Improve the tried and trusted, develop new products, follow the demands of the market and satisfy customer requirements. Our products should reflect all of these things.

The demand for transportable, qualified Traffic Controlled Devices that can handle large intersections and special requests is continuously increasing. To handle these situations, transportable Masts, Whip Masts and Portals are inevitable.

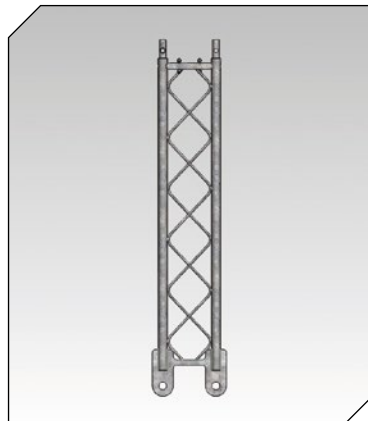
Therefore, we have expand our range of products with transportable modular Masts, Whip Masts and Portals in various lengths and heights. The name of this new product is MTI "Mobile Traffic Installation".

These exclusive MTI product solutions are available for hire and sale or as part of a complete Traffic System package including the installation and removal of the MTI and Mobile Traffic Device.

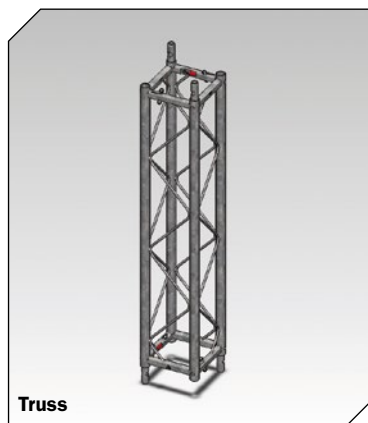
We can give fast free advice on the best solution for clients particular application followed by safe, efficient installation by rental on site or sales.



Basic Truss



Basic Truss

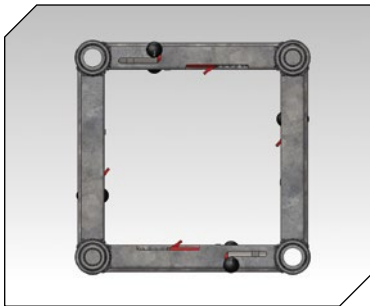


Truss

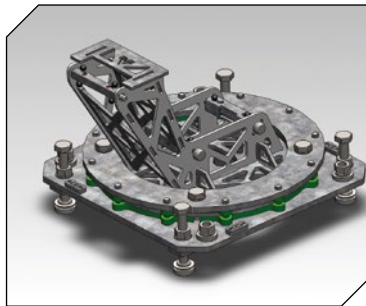
- **MTI** is a modular, all steel system engineered to provide an 'off the shelf' solution to your masts or portal requirements. Available Whip Masts up to 6 metres and portals up to 22 metres.
- **MTI** is designed for simple rapid installation on site normally by our clients own site teams, we can provide an installation service including the provision of experienced labour.
- **MTI** masts, poles and portals can be assembled by 2 men without extra tools
- **MTI** corresponds to all European laws concerning; environment, Occupational Safety and Health, static calculations

MTI elements are:

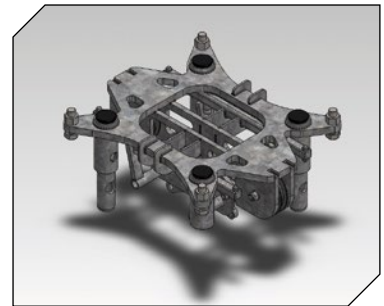
- Truss
- Concrete Base
- Skirt
- Turntable
- Basic Truss
- Nacelle
- Top plate
- Coupling piece
- Lyre



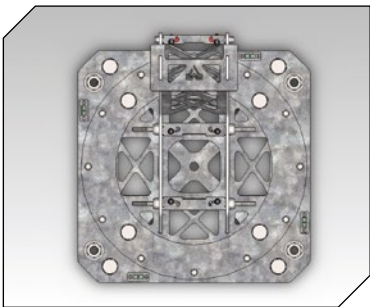
Coupling Piece



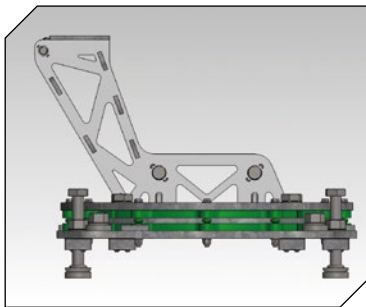
Turntable



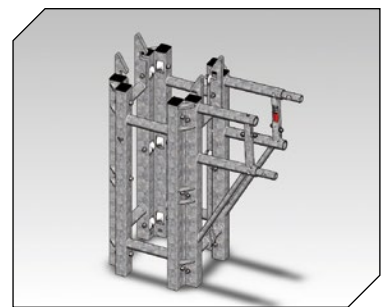
Top Plate



Turntable



Turntable



Gondel

De MTI (Mobile Traffic Installation) wordt toegepast bij mobiele verkeersinstallaties en kan snel langs de kant van de weg worden opgebouwd. Slechts 2 medewerkers monteren zonder kraan of extra gereedschap de modulair ontwikkelde constructie.

Door de extra korte opbouwtijd ontstaat er minder verkeersstoring. De truss constructie zorgt voor eenvoudige en efficiënte logistiek.

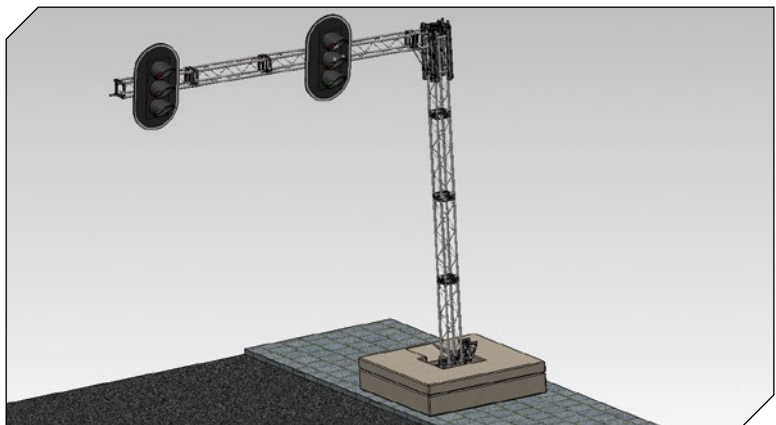
Bij mobiele masten, zweepmasten en portalen speelt statica een grote rol.

Valmont die de MTI voor Fabema heeft ontwikkeld, heeft hieraan de grootste zorg besteed.

De constructie voldoet aan alle normen en eisen.

De maximale lengte bij een zweepmast is 6 meter en bij een portaalconstructie 22 meter.

Graag adviseren wij U over de beste oplossing met de MTI.





FABEMA GmbH • Hähn 10a • D-51515 Kürten • Germany • Tel. +49-2207-9658-0 • Fax. +49-2207-9658-50
Branch East: Im Camisch • Gewerbegebiet Nord • D-07768 Kahla • Germany • Tel. +49-36424-24080 • Fax. +49-36424-24081
info@fabema.de • www.fabema.de